

# RDG 50 GREAT THERMAL PROTECTION, TEAR STRENGTH AND FLEXIBILITY.

INNO  
TEX  
ENERGY™

Shorter front, longer back coat. Low-rise pant. Streamline design packed with a host of innovative, ergonomic features.

## STANDARD FEATURES

- A VARIABLE HEIGHT COLLAR™**  
Low-rise front, high-rise back neck/collar configuration. US Patent 8,151,371
- B NO-GAP™ THROAT FLAP**  
Provides a NO-GAP™ thermal protection.
- C ERGONOMIC FULL MOTION NOSEAM™ SHOULDER**  
Designed to follow natural arm movements for optimal mobility. Seams are placed away from high-abrasion areas.
- D RETRACTABLE ACTION BACK**  
Adds length across your back. Increased mobility when reaching and stretching.
- E DURAHAM™ SLEEVE AND LEG HEMS**  
Ultra-resistant aramid-coated piping sewn to the cuff. Protects cuffs from abrasion. (Patent pending)
- F ANGLED CUFF SLEEVE HEM**  
Increases protection for the top of the hand without compromising hand mobility.
- G OFFSET SEAM DESIGN**  
Seams are positioned away from high-abrasion areas, increasing wear life.
- H ADJUSTABLE BELT**  
Comes with a 2-inch Nomex™ belt.
- I COMPLETE MOTION CROTCH**  
Allows greater freedom of movement and prevents twisting.
- J ENHANCED MOBILITY KNEE™ (EMK™)**  
Enhances mobility without tugging. Ensures that the knee protection stays securely in place.
- K NO-BULK™ PANT CLOSURE**  
Streamlined 3-layer pant closure flap.
- L REFLECTIVE PIPING SEAMS**  
Increases visibility.
- M EASY-TO-GRIP PADDED PULL TAB**  
Oversized and padded for easy handling with gloves.



## PRECONFIGURED OPTIONS

- 1** Black Nomex® wristlet with thumb hole.
- 2** Left chest 8" X 4" X 2" radio pocket with mic loop.
- 3** Right chest flashlight holder - Clip with Hook & Loop Fastener.
- 4** Two 8" x 9" semi-bellows pockets on coat.
- 5** 3M™ Scotchlite™ reflective 3" triple segmented trim (Lime/Yellow and Grey) in New York Pattern.
- 6** Two 10" x 10" bellows pockets on pants.
- 7** 7.5" X 8" inside left pocket with 1" X 3" hook & loop attachment. (Not on picture)
- 8** Deluxe heavy-duty removable cotton "H" back suspenders with padding.

Additional options available on request (\$).

TPP 54 THL 247

### OUTER SHELL



**ARMOR AP™ – Black color**  
400-denier multi-filament twill weave with water repellent finish.  
**Content:** Kevlar®/Nomex®  
**Weight:** 6.5 oz/yd<sup>2</sup>



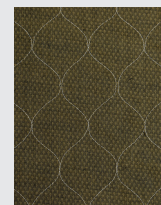
### MOISTURE BARRIER



**GORE® RT 7100 3D**  
**Substrate:** Nomex® non-woven spunlace.  
**Film:** Bi-component ePTFE membrane.  
**Total Weight:** 4.6 oz/yd<sup>2</sup>

**GORE®  
RT 7100**

### THERMAL LINER



**PRISM™ 2-layer**  
**Face Cloth:** 68% aramid / 21% FR viscose / 11% polyamide Dobby weave.  
**Batting:** One layer of a E89™ spunlace - 2.3 oz/yd<sup>2</sup> and 1.5 oz/yd<sup>2</sup>  
**Total Weight:** 7.4 oz/yd<sup>2</sup>



# OPTIONS & SIZES


## ADDITIONAL OPTIONS (\$)


COAT	CLASSIC™		ENERGY™		
	RDG 10	RDG 20	RDG 40	RDG 50	RDG 60
Mic loop / P.A.S.S. loop	●	●	●	●	●
Flashlight Holder - Clip with Hook & Loop Fastener (SL-90)	●	●	●	●	●
Flashlight Holder - Tab with Hook & Loop Fastener	●	●	●	●	●
Flashlight Holder - Riveted clip with Hook & Loop Fastener	●	●	●	●	●
Utility clip on shell strap	●	●	●	●	●
Utility clip on polymer coated aramid loop	●	●	●	●	●
D-Ring on shell strap	●	●	●	●	●
Riveted D-Ring	●	●	●	●	●
Riveted clip	●	●	●	●	●
Fixed glove strap	●	●	●	●	●
Removable utility clip QRS system			●	●	●
Removable utility glove strap QRS system			●	●	●
3M Scotchlite® 5686 - 3" (triple segmented trim) - Red-Orange & Grey			●	●	●
3M Scotchlite® 9586 - 3" (triple trim) - Red-Orange & Grey	●	●			

PANTS	RDG 10	RDG 20	RDG 40	RDG 50	RDG 60
Leg gaitor Neoprene	●	●	●	●	●
Fixed glove strap	●	●	●	●	●
D-Ring on shell strap	●	●	●	●	●
Riveted D-Ring	●	●	●	●	●
Riveted clip	●	●	●	●	●
Utility clip on shell strap	●	●	●	●	●
Kevlar belt	●	●			
Belt loops (4x1.5) unit	●	●			
3M Scotchlite® 5686 - 3" (triple segmented trim) - Red-Orange & Grey			●	●	●
3M Scotchlite® 9586 - 3" (triple trim) - Red-Orange & Grey	●	●			

## SIZES

COAT 7 sizes, from S to 4XL. Comes in body 2 with regular sleeve length.								PANTS 28,30, 32 or 34 inseams.							
SIZE	S	M	L	XL	2XL	3XL	4XL	SIZE	S	M	L	XL	2XL	3XL	4XL
CHEST	36	40	44	48	52	56	60	WAIST	30	34	38	42	46	50	54

 **INNOTEX® USA**  
2397 Harts Ferry Road  
Ohatchee, AL 36271  
USA

 **INNOTEX® CANADA**  
275 Gouin Street  
Richmond (Quebec)  
Canada, J0B 2H0

**CUSTOMER SERVICE**  
1-888-821-3121 (U.S. & Canada)  
Tel: 819-826-5971  
Fax: 819-826-5195

 **Kevlar® | Nomex®**  **PERFORMANCE PRODUCTS, INC.**



www.innotexprotection.com